

WE SELL A LIFESTYLE



ДОМ 430М КГ ЯСНЫЙ ХУТОР
ЛЕСНИКИ

\$ 2 200 000

\$ 5 116 m²

Address: Kiev region, Novo-Obukhiv
highway, KC Yasnaya Polyana, Киево-
Святошинский р-н

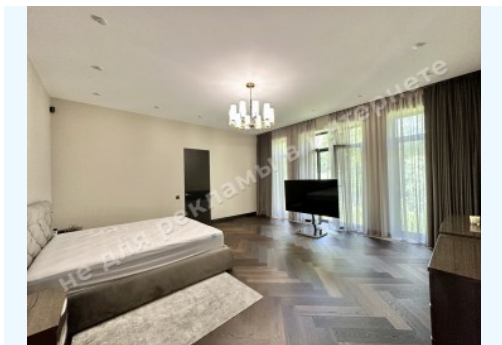
Area: 430 m²

Plot size: 0.23 ha

ID: 4-00469

PHOTO GALLERY









DESCRIPTION

Plot size (ha): 0.23 ha

Exit to: mixed forest

Status: in property

Special purpose: construction and maintenance

House area (m²): 430.00 m²

Number of floors: 2

Number of bedrooms: 4

1й этаж: Living room, Kitchen with a dining area, Guest bedroom, 1 Bathroom, Wardrobe, BBQ Terrace, Laundry

2й этаж: 3 bedrooms with bathrooms and walk-in closets

House condition: Equipped with furniture and appliances

House status: brought into operation

Buildings: swimming pool, Garage

Beautification: landscaping

Gas: connected

Water: connected

Sewerage: connected

Electricity: connected

Safety: KC security

Type of locality: Cottage City zone, Cottage City

Transport accessibility: convenient transport accessibility along the Novo-Obukhiv highway



LOCATION

Image not found or type unknown

